

*Vespers of 1610*  
*Monteverdi*

*Edition: John Kilpatrick – 2010*

**TROMBONE 3**  
**(Bass Trombone)**

# 1. Deus in adjutorium

TROMBONE 3

*tenor solo*

De - us, in ad - ju - to - ri - um me - um in - ten - de:

10

15 **A**

24

29 **B**

37

45 **C**

51

# 2. Dixit Dominus

TROMBONE 3

8

12 **A** *various time signatures* 8 8

Donec ponam inimicos ... Scabellum pedum tu- ... (strings: ritornello)

28 **B** 4

36 5

44 **C** *various time signatures* 9 7

Tecum principium in die virtutis .. In splendoribus sanctorum ... (strings: ritornello)

60 **D** 3

67 5

75 **E** *various time signatures* 5 7

Dominus a dextris ... Confregit in die iræ suæ ... (strings: ritornello)

87 **F** 4

Judicabit in nationibus ...

96 4

conquassabit ..

104 **G** 10 **H** *Gloria tenor solo* 4 3

De torrente in via Gloria Patri ..... ... et Spiritui Sancto

121 **J**

126

132

### 3. Nigra sum - Tacet

## 4. Laudate pueri

TROMBONE 3

5 4

13 A 15 B 11 C 11

Sit nomen Domini .. A solis ortu .. Excelsus super omnes ..

52 D 23 E strings & choir 2

Quis sicut Dominus .. Suscitans a terra ..

80 strings & choir F

e - ri - gens, e - ri - gens, e - ri - gens, e - ri - gens

85

91

97 G 10

Qui habitare .. ma-trem fi-li-o-rum læ-tan-

108 H GloriaCtt.3 13

126 J 2 Tbn.1 3

Sicut erat in principio ...

134 K 7

5. Pulchra es - Tacet

TROMBONE 3

6. Laetatus sum

8

14

19

A 7 B 21 C 7

Jerusalem .. Illuc enim .. ad confitendum ..

58

D 6 Bass

Quia illic sederunt .. do-mum, su - per do-mum, su - per do-mum, su - per do-mum Da - vid.

67

E 6

78

F 8 G 11 H 7 J 8

Fiat pax .. Propter ... Propter fratres ... Propter domum domini

115

K Gloria

121

127

L 2

132

# 7. Duo Seraphim - Tacet

TROMBONE 3 (bass)

## 8. Nisi Dominus

*Bassus Generalis*

7

13

19 A 14 B 14 C 14

Nisi ... Vanum ... Cum dederit ...

62 D 4 2

Sicut sagittæ ...

72 E 10 F *Gloria*  
*Strings enter* 6

Beatus vir ... Gloria Patri ...

90 G *Bassus Generalis*

97 H

104

the higher (bracketed) notes are the originals

# 9. Audi Cœlum

TROMBONE 3 (bass)

17 **A** 16 **B** 22

Audi cœlum .. Dic, dic quæso .. Dic nam ista ..

56 **C** 11 **D** 6 **E** 7 4

Maria virgo .. Illa sacra .. Quæ semper .. Omnes .....

85 **F** *tutti* 12

qua cum gra - ti - a,

101 4

*tenor & echo*

110 **G** *tutti* 12

cu - jus no - men,

126 6

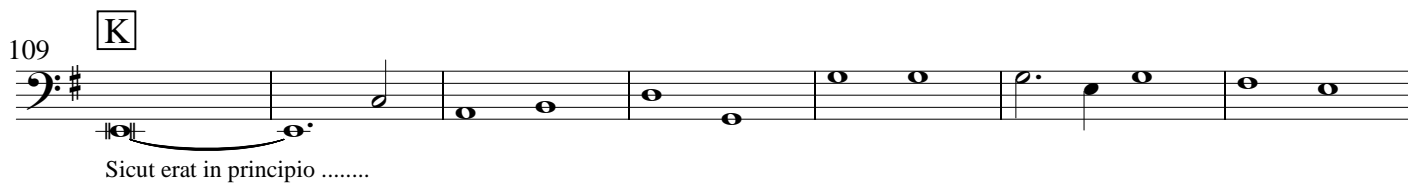
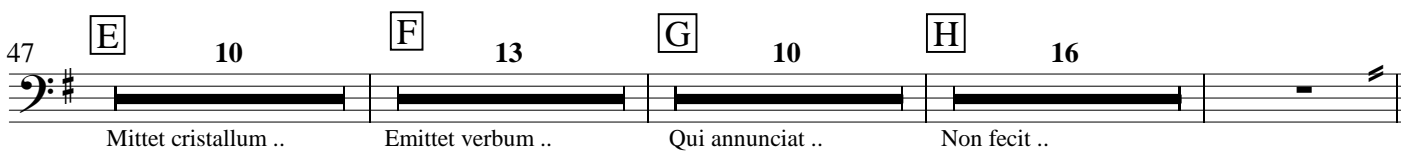
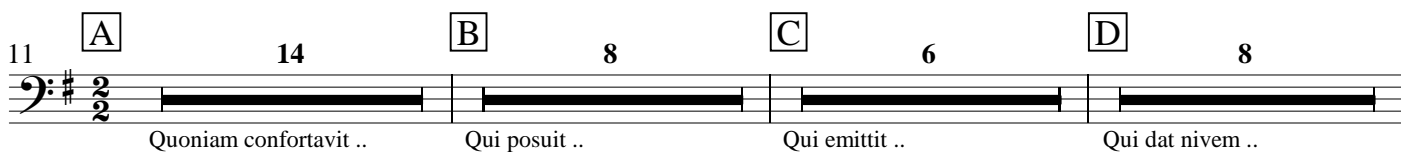
*tenor & echo*

135 **H** 2

142

## 10. Lauda Jerusalem

TROMBONE 3 (bass)





96 **F** 2 2

102 **G** 3 3 3

106 3 3 3 3 3

111 3 3 3 3 3 3 3

116 **H** 4

124

130 2 **J**

136 2

141 **K** 6

151 L

Musical staff for measure 151, bass clef. The staff contains six measures of music. The first measure has a dotted quarter rest followed by two eighth notes. The second measure has a quarter note, a quarter note, and a quarter note. The third measure has a quarter note, a quarter rest, and a dotted quarter rest. The fourth measure has a dotted quarter rest, a quarter note, and a quarter note. The fifth measure has a quarter note, a quarter note, and a quarter note. The sixth measure has a dotted quarter rest.

157

Musical staff for measure 157, bass clef. The staff contains six measures of music. The first measure has a dotted quarter rest, a quarter note, and a quarter note. The second measure has a quarter note, a quarter note, and a quarter note. The third measure has a quarter note, a quarter rest, and a dotted quarter rest. The fourth measure is a whole rest. The fifth measure has a dotted quarter rest, a quarter note, and a quarter note. The sixth measure has a quarter note, a quarter note, and a quarter note.

163

Musical staff for measure 163, bass clef. The staff contains six measures of music. The first measure has a quarter note, a quarter note, a quarter note, and a quarter note. The second measure has a quarter note, a quarter rest, and a dotted quarter rest. The third measure has a dotted quarter rest, a quarter note, and a quarter note. The fourth measure has a quarter note, a quarter note, and a quarter note. The fifth measure has a time signature change to 4/2, followed by a quarter note, a quarter note, and a quarter note. The sixth measure has a whole note with a fermata.

169 M

Musical staff for measure 169, bass clef. The staff contains six measures of music. The first measure has a quarter note, a quarter note, a quarter note, and a quarter note. The second measure has a quarter note, a quarter note, and a whole note. The third measure has a quarter note, a quarter note, and a quarter note. The fourth measure has a quarter note, a quarter note, and a whole note. The fifth measure has a quarter note, a quarter note, and a quarter note. The sixth measure has a quarter note, a quarter note, and a quarter note.

174 N

Musical staff for measure 174, bass clef. The staff contains six measures of music. The first measure has a quarter note, a quarter note, and a whole note. The second measure has a quarter note, a quarter note, and a quarter note. The third measure has a quarter note, a quarter note, and a whole note. The fourth measure has a time signature change to 6/4, followed by a quarter note, a quarter note, and a quarter note. The fifth measure has a quarter note, a quarter note, and a quarter note. The sixth measure has a quarter note, a quarter note, and a quarter note.

179

Musical staff for measure 179, bass clef. The staff contains six measures of music. The first measure has a quarter note, a quarter note, and a quarter note. The second measure has a quarter note, a quarter note, and a quarter note. The third measure has a quarter note, a quarter note, and a quarter note. The fourth measure has a quarter note, a quarter note, and a quarter note. The fifth measure has a quarter note, a quarter note, and a quarter note. The sixth measure has a quarter note, a quarter note, and a quarter note.

183

Musical staff for measure 183, bass clef. The staff contains six measures of music. The first measure has a time signature change to 9/4, followed by a quarter note, a quarter note, and a quarter note. The second measure has a time signature change to 4/2, followed by a quarter note, a quarter note, and a whole note. The third measure has a double bar line. The fourth measure has a double bar line. The fifth measure has a double bar line. The sixth measure has a whole note with a fermata.

## 12. Ave Maris Stella

TROMBONE 3 (bass)

verse 1 (choir) 16      verse 2 (choir 1) 12

29 *ritornello 1 (strings)* 12      verse 3 (choir 2) 12

53 *ritornello 2 (brass)* 12      verse 4 (sop. 1 solo) 12

77 *ritornello 3 (strings)* 12      verse 5 (sop. 2 solo) 12

101 *ritornello 4 (brass)*

107

113 verse 6 (tenor solo) 12

125 verse 7 (tutti)

131

138

# 13. Magnificat

TROMBONE 3 (Bass)

## 1. Magnificat anima mea

5

*Tbn.2*

## 2. Et exultavit

13 27

## 3. Quia respexit

40 7 recorder

54

60 5 8

## 4. Quia fecit

74 16

## 5. Et misericordia

90 29

## 6. Fecit potentiam

119 36

## 7. Deposuit potentes

155 16 15

## 8. Esurientes

186 Various time signatures 41

*3 Cornetti*

## 9. Suscepit Israel

227 18

10. Sicut locutus

245

Measure 245: Bass clef, 4/2 time signature. The staff contains a whole rest followed by a sequence of eighth notes: G2, A2, B2, A2, G2, F2, E2, D2.

249

Measure 249: Bass clef, 4/2 time signature. The staff contains a whole rest followed by a sequence of eighth notes: G2, A2, B2, A2, G2, F2, E2, D2, then a half note G2.

255

Measure 255: Bass clef, 4/2 time signature. The staff contains a whole note G2, followed by a whole rest, then a sequence of eighth notes: G2, A2, B2, A2, G2, F2, E2, D2, and finally a dotted quarter note G2.

259

Measure 259: Bass clef, 4/2 time signature. The staff contains a dotted quarter note G2, an eighth rest, a quarter note A2, a quarter rest, a quarter note B2, a quarter note A2, a quarter note G2, a quarter note F2, a quarter note E2, and a half note G2.

11. Gloria

264

37

Measure 264: Bass clef, 4/4 time signature. The staff contains a single whole rest.

12. Sicut erat

301

Measure 301: Bass clef, 4/2 time signature. The staff contains a half note G2, a half note A2, a half note B2, a half note A2, a half note G2, a half note F2, a half note E2, and a half note D2.

308

Measure 308: Bass clef, 4/2 time signature. The staff contains a half note G2, a half note A2, a half note B2, a half note A2, a half note G2, a half note F2, a half note E2, and a half note D2.

315

Measure 315: Bass clef, 4/2 time signature. The staff contains a half note G2, a half note A2, a half note B2, a half note A2, a half note G2, a half note F2, a half note E2, and a half note D2.

321

Measure 321: Bass clef, 4/2 time signature. The staff contains a half note G2, a half note A2, a half note B2, a half note A2, a half note G2, a half note F2, a half note E2, and a half note D2.

Amen

328

Measure 328: Bass clef, 4/2 time signature. The staff contains a dotted quarter note G2, an eighth note A2, an eighth note B2, a quarter note A2, a quarter note G2, a quarter note F2, a quarter note E2, a quarter note D2, a quarter note C2, a quarter note B1, a quarter note A1, a quarter note G1, a quarter note F1, a quarter note E1, and a half note D1.

331

Measure 331: Bass clef, 4/2 time signature. The staff contains a dotted quarter note G2, an eighth note A2, an eighth note B2, a quarter note A2, a quarter note G2, a quarter note F2, a quarter note E2, a quarter note D2, a quarter note C2, a quarter note B1, a quarter note A1, a quarter note G1, a quarter note F1, a quarter note E1, and a half note D1.